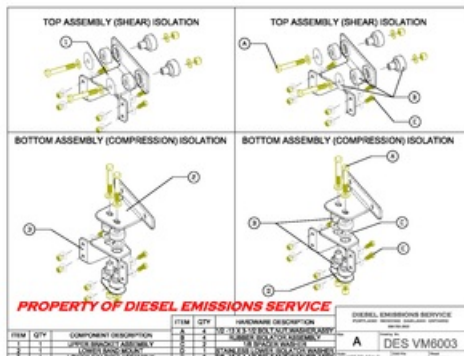
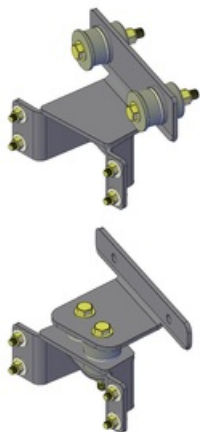


DESVM6003

H-Duty vert mount w/ isolators (angled)



PROPERTY OF DIESEL EMISSIONS SERVICE

*Due to continuous improvements to our products, actual items ordered and received may differ slightly from images shown.

Features:

- DESVM6003 mounting kit brackets are designed to mount "passive" DPF systems (NOT EXCEEDING 125 lbs.) vertically utilizing rubber isolation with DESVM6004 Stanchion kit (SHOWN BUT NO INCLUDED).
- DESVM6003 angled design rotates the filter out of line of sight 17 degrees, improving visibility.
- Constructed and welded using mild steel.
- All parts are powder coated in black.
- All hardware (hex bolts, flat washers, nylock nuts) are yellow zinc chromate, grade 8 (included). Test

Installation:

1. Brackets must be assembled as shown and hardware torqued to **listed standards, FAILURE TO DO SO MAY CAUSE DAMAGE TO THE "DPF" SYSTEM OR INJURY TO PERSONS.
2. Do not tighten isolation hardware to the listed torque specifications! Reasonable care should be taken when tightening, to ensure equal compression and avoid excessive compression of the isolator.
3. After filter and heat shield are installed, ensure the DPF system does not obstruct or impair the drivers use of the mirrors.
4. **TORQUE SPECIFICATIONS: 3/8-16 GRADE 8 (40-50 ft lbs.) 7/16-14 GRADE 8 (60-75 ft lbs.) 1/2-13 GRADE 8 (90-110 ft lbs.)