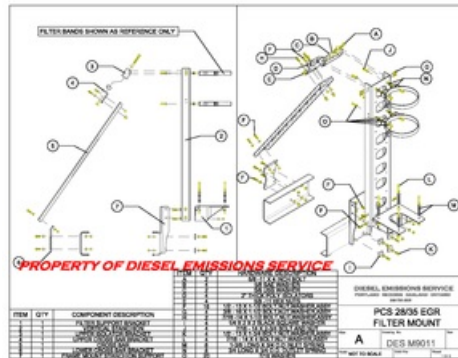
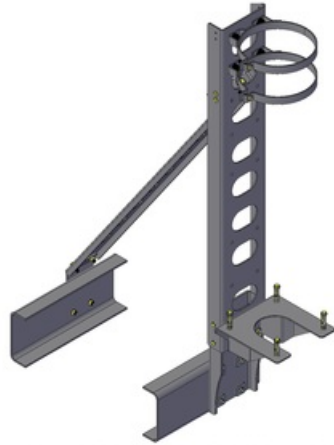


# DESM9011

PCS 28-35 EGR



PROPERTY OF DIESEL EMISSIONS SERVICE

\*Due to continuous improvements to our products, actual items ordered and received may differ slightly from images shown.

## Features:

- DESM9011 mounting brackets are designed to mount the PCS 28-35 EGR system.
- Cross bar support utilizes poly isolators.
- Constructed and welded using mild steel
- All parts are powder coated black
- All bands (which are NOT included) are powder coated hi-temp black.
- All hardware (hex bolts, flat washers, nylock nuts) are yellow zinc chromate, grade 8 (included).

## Installation:

1. Brackets must be assembled as shown and hardware torqued to \*\*listed standards, FAILURE TO DO SO MAY CAUSE DAMAGE TO THE "DPF" SYSTEM OR INJURY TO PERSONS.
2. Tighten the (2) upper mounting band isolation spring hardware to the bottom of threads on bolt. This ensures proper compression of spring for optimum isolation.
3. DO NOT tighten isolation spring hardware to the listed torque specifications! Reasonable care should be taken when tightening, to ensure equal compression and avoid excessive compression of the isolator springs.
4. After filter and guard are installed, ensure the DPF system does not obstruct or impair the drivers use of the mirrors.
5. \*\* TORQUE SPECIFICATIONS: 3/8-16 GRADE 8 (40-50 ft lbs) 7/16-14 GRADE 8 (60-75 ft lbs.) 1/2-13 GRADE 8 (90-110 ft lbs.)