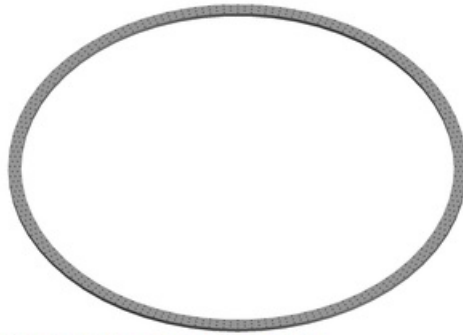
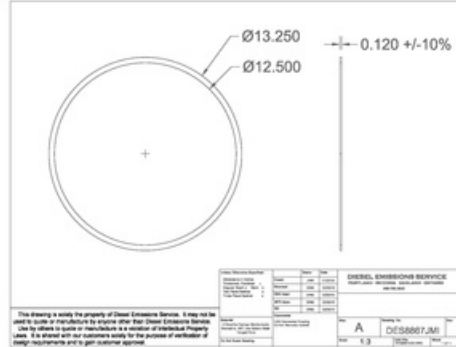


DES8867JMI

12" DPF Gasket



PROPERTY OF DIESEL EMISSIONS SERVICE



*Due to continuous improvements to our products, actual items ordered and received may differ slightly from images shown.

Features:

- Gasket fits Johnson Matthey size "C" (12" System)
- Gasket dimensions are 12-1/2" ID x 13-1/4" OD
- Constructed from (2) graphite facings mechanically bonded to a low carbon steel core
- Overall thickness (.120 +/- 10%)

Installation:

1. The filter "V" band and filter flanges should be inspected for bent or damaged surfaces before installing gasket
2. Care should be taken to ensure filter flanges are free from residual gasket material and debris before installing the new gasket.
3. After installation of new gasket and filter "V" band clamp, inspect for leakage.