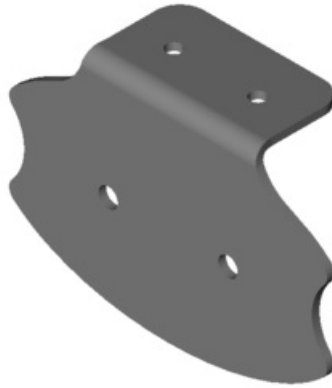


DESB6007

J/M driver display bracket



*Due to continuous improvements to our products, actual items ordered and received may differ slightly from images shown.

Features:

- DESB6007 can be mounted multiple positions, and comes with universal pattern to mount driver display.
- Constructed from marine grade aluminum.
- Bracket is powder coated black. (special colors available upon request)

Installation:

1. Mount the mounting bracket to a surface which is strong enough to support the weight of the display.
2. After mounting the driver display and the bracket, check to ensure the operator good visual sight of the driver display.
3. Do not use mounting bracket as a grounding source