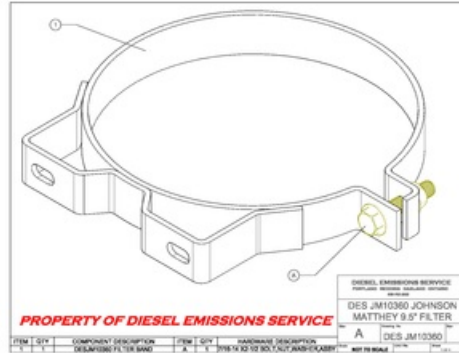


DESJM10360 BAND

JM 9.5" system mounting band 10.36 DIA



PROPERTY OF DIESEL EMISSIONS SERVICE



*Due to continuous improvements to our products, actual items ordered and received may differ slightly from images shown.

Features:

- DESJM10360 BAND is designed to mount the Johnson Matthey 9.5" AdvCCRT/CRT system.
- Mounting slots are .50 X 1.00 spaced 6" on center
- Mounting band is constructed from 1-1/2" wide 3/16" thick mild steel.
- Filter mounting bands are powder coated "HI TEMP" black.
- All hardware (hex bolts, flat washers, nylock nuts) are yellow zinc chromate, grade 8 (included).

Installation:

1. Band and hardware must be assembled as shown and hardware "MUST NOT" be torqued to industry standards.
2. Tighten band hardware as necessary to prevent crushing of the filter outer can. FAILURE TO DO SO MAY CAUSE DAMAGE TO THE "DPF" SYSTEM.
3. Position the filter mounting bands to ensure adequate ground clearance between filter and roadway.