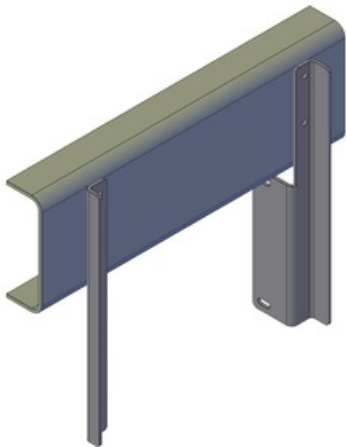
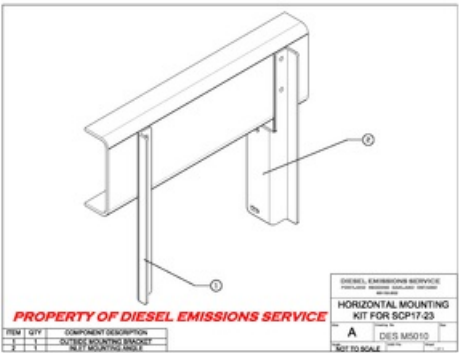


# DESM5010

Horizontal mounting kit for SCP17-23



PROPERTY OF DIESEL EMISSIONS SERVICE



PROPERTY OF DIESEL EMISSIONS SERVICE

ITEM	QTY	COMPONENT DESCRIPTION
1	1	HORIZONTAL MOUNTING KIT FOR SCP17-23
2	2	HORIZONTAL MOUNTING KIT FOR SCP17-23

DIESEL EMISSIONS SERVICE	
HORIZONTAL MOUNTING KIT FOR SCP17-23	
DESM5010	
A	
DIESEL EMISSIONS SERVICE	
NOT TO SCALE	

\*Due to continuous improvements to our products, actual items ordered and received may differ slightly from images shown.

## Features:

- DESM5010 mounting kit brackets are designed to mount SCP 17-23 DPF "active" systems to the outside of the frame rail while allowing the filter body to be positioned under the frame of the truck
- Mounting the filter with these brackets generally does not require an additional heat shield
- Constructed from 1/4" mild steel.
- Brackets are powder coated black.
- Hardware (hex bolts, flat washers, nylock nuts) are recommended to be yellow zinc chromate grade 8.

## Installation:

1. Attach the inlet base of filter to the slots provided in the larger bracket, then attach outlet section to the angle using mounting bands provided by the filter manufacturer.
2. Care should be taken to ensure no air lines, fuel lines, and/or wiring is between frame and brackets before tightening.
3. Position the adjustable filter mount to ensure adequate ground clearance between filter and roadway.
4. Hardware should be torqued to \*\*listed standards, FAILURE TO DO SO MAY CAUSE DAMAGE TO THE "DPF" SYSTEM
5. \*\*TORQUE SPECIFICATIONS: 3/8-16 GRADE 8 (40-50 ft lbs.) 7/16-14 GRADE 8 (60-75 ft lbs.) 1/2-13 GRADE 8 (90-110 ft lbs.)