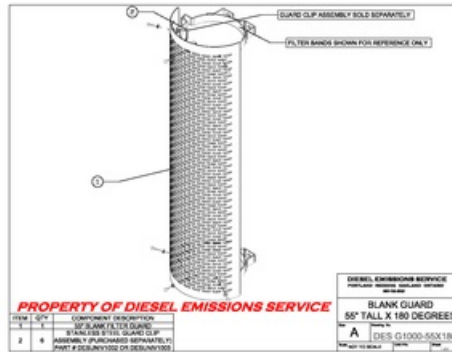
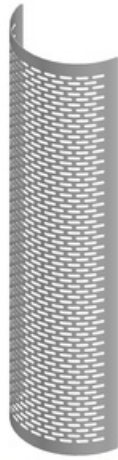


DESG1000-55X180

Blank guard 55" tall 180 degrees



PROPERTY OF DIESEL EMISSIONS SERVICE

*Due to continuous improvements to our products, actual items ordered and received may differ slightly from images shown.

Features:

- DESG1000-55X180 guard is 55" long and 15.5" in diameter and is constructed from 5000 series marine grade aluminum.
- The guard offers protection for approximately 180 degrees of the DPF surface.
- The guard is mounted to the DPF with stainless steel guard clips (DESUNIV1002 or DESUNIV1003) purchased separately.
- The oblong holes in the guard provide unlimited bolt holes to mount the guard with.
- The guard is manufactured and shipped with protective PVC tape on the face which keeps the guard virtually free of blemishes during the installation.

Installation:

1. Care should be taken to ensure no air lines, fuel lines, and/or wiring is between frame and brackets before tightening.
2. Components should be oriented as shown before before tightening all fasteners.
3. Position the adjustable filter mount to ensure adequate ground clearance between filter and roadway.